

Ionizing Radiation Risks

Intense ionizing radiation fields, blocked by appropriate shielding, are produced inside the storage ring. A sophisticated access control system has been implemented to prevent access to the machine if safety conditions for personnel are not met.

Outside the shielding there are areas where radiation levels exceed background levels and where there is a risk of exposure to ionizing radiation. These areas are surrounded by fences, by the walls of the rooms or by shielding and marked by signs with the words: "ionizing radiation" or "supervised area" or "controlled area" and the symbol that devotes ionizing radiation.

Access to these areas is forbidden for employees of external companies and any exception is regulated by special radiation protection standards issued by the competent Radiation Protection Group.



Contact Information

Reception:
040 375 [8247]

Health & Safety Manager
Flavio Bavdaz
040 375 [8437]
335 7551663 [#89755]

Radiation Protection Manager
Alessandro Vascotto
040 375 [8012]
335 7592399 [#89291]

Control Room Elettra
040 375 [8262] [8263]

Control Room FERMI
040 375 [8800]

Emergency
040 375 [8333]

For further information please visit our website:
<http://www.elettra.trieste.it/Safety>

** from an internal phone please dial only the number in brackets*



SAFETY BOOKLET

FOR VISITORS



EMERGENCY NUMBERS

Emergency **8333**
Control Rooms **8262/8263/8800**



Emergency Procedures



In case of fire

- Call 8333 and tell the operator exactly where the fire is.
- Attempt to extinguish the fire only if it is safe to do so, without taking personal risk. Remember to use the appropriate fire extinguisher.
- Break the glass of the nearest fire alarm point, warn people in the vicinity, reach the nearest available exit and go to the gathering point (see the map to side).



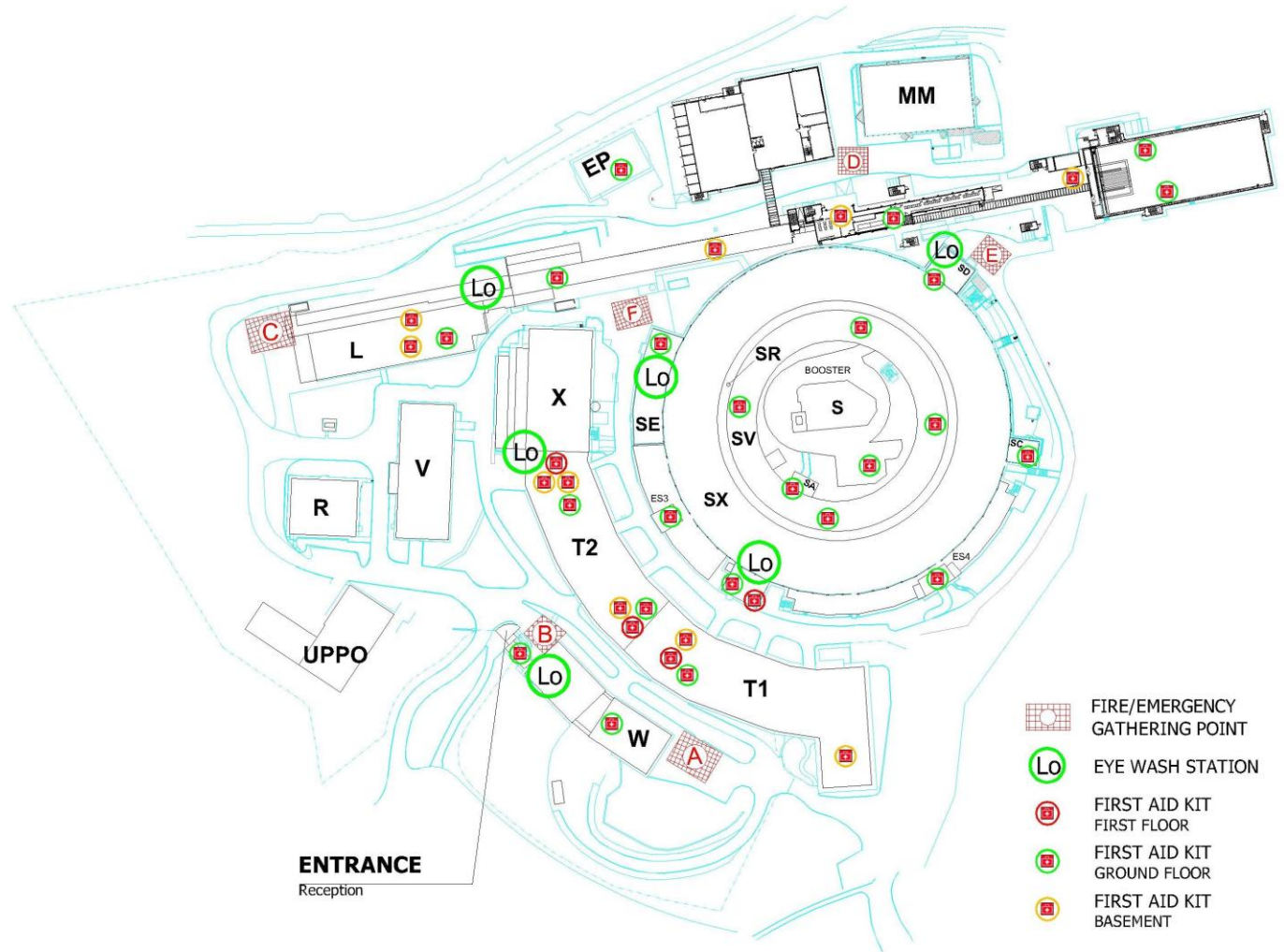
In case of injury

- If the injury is minor use the first aid kits available in the Experimental Hall and in the other buildings of the lab.
- If the injury is serious call 8333 and tell the operator what has happened.
- Do not leave the injured person alone until the emergency services arrive.



In case of alarm

- If a loudspeaker announcement is on, follow the instructions and act accordingly.
- If you hear an alarm, reach the gathering points (see the map to side).



- FIRE/EMERGENCY GATHERING POINT
- EYE WASH STATION
- FIRST AID KIT FIRST FLOOR
- FIRST AID KIT GROUND FLOOR
- FIRST AID KIT BASEMENT

General Regulation



Please observe safety signs and warnings.



Do not enter. Access limited to authorized personnel only.



Smoking is not allowed inside any building.



Please pay attention to warning signs.



Pay attention to any obstacle and marked danger points.



Carefully observe road signs.