
Direct spectroscopic evidence for phase competition between the pseudogap and superconductivity

Makoto Hashimoto

SLAC National Accelerator Laboratory

SCSR2014
Dec. 10th, 2014



U.S. DEPARTMENT OF
ENERGY

Office of
Science



outline

1. Introduction
2. Pseudogap as a distinct phase
3. Competition between the pseudogap and superconductivity
4. Summary

collaborators

■ ARPES

- R.-H. He, I. M. Vishik, Y. He, S. Chen, K. Tanaka, R. G. Moore, D. H. Lu, Z.-X. Shen (Stanford/SLAC)
- A. Fujimori (U. Tokyo), Z. Hussain (LBNL)

■ Samples (Bi2201, Bi2212)

- Y. Yoshida, M. Ishikado, H. Eisaki (AIST)
- K. Fujita, S. Ishida, S. Uchida (U. Tokyo)
- T. Sasagawa (Tokyo Institute of Technology)

■ Theory

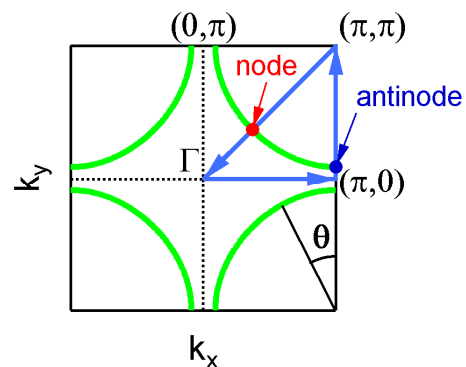
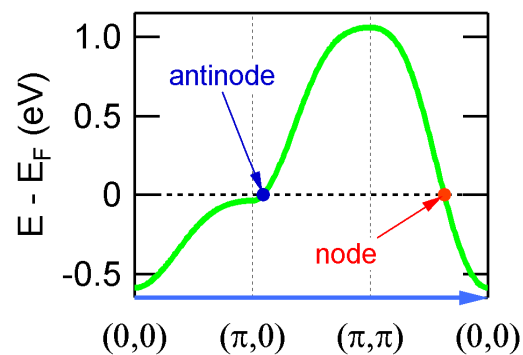
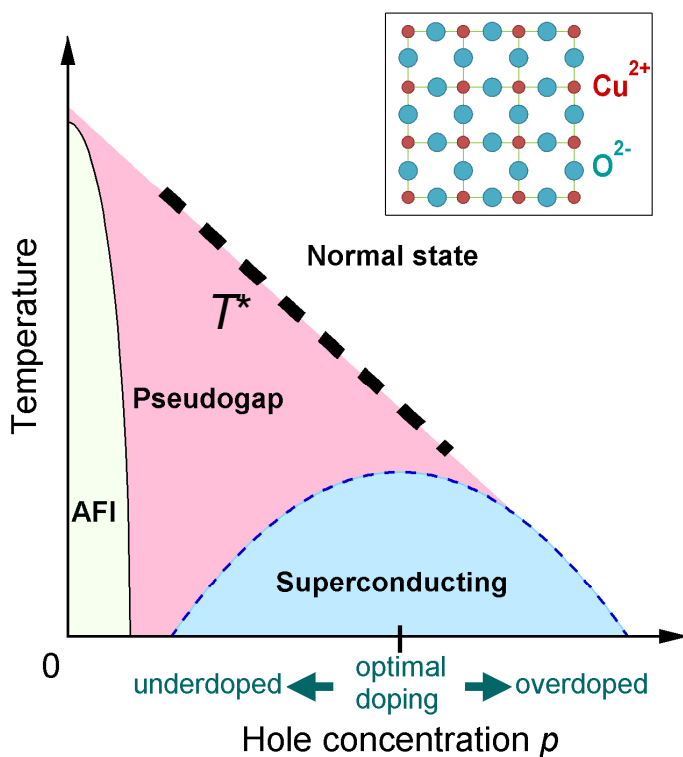
- B. Nowadnick, B. Moritz, T. P. Devereaux (Stanford/SLAC)

■ RIXS

- G. Ghiringhelli, G. Dellea, A. Amorese, C. Mazzoli, L. Braicovich (Politecnico di Milano)
- W.-S. Lee (SLAC)
- K. Kummer, N. B. Brookes (ESRF)



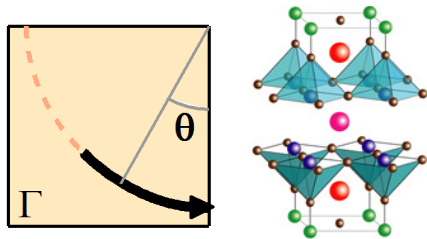
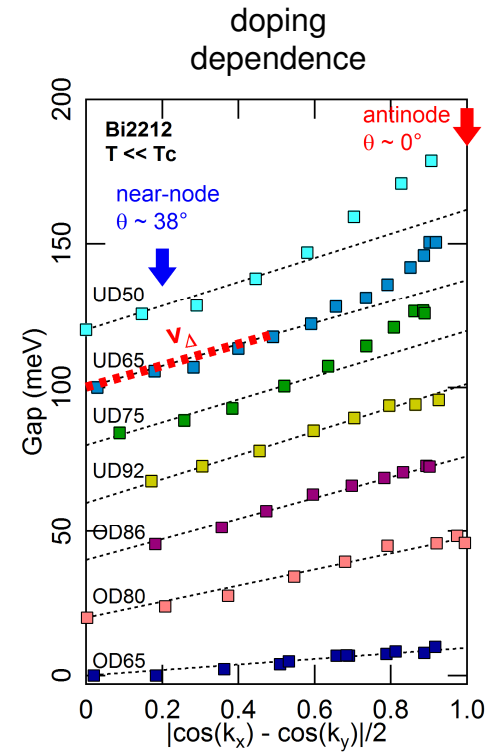
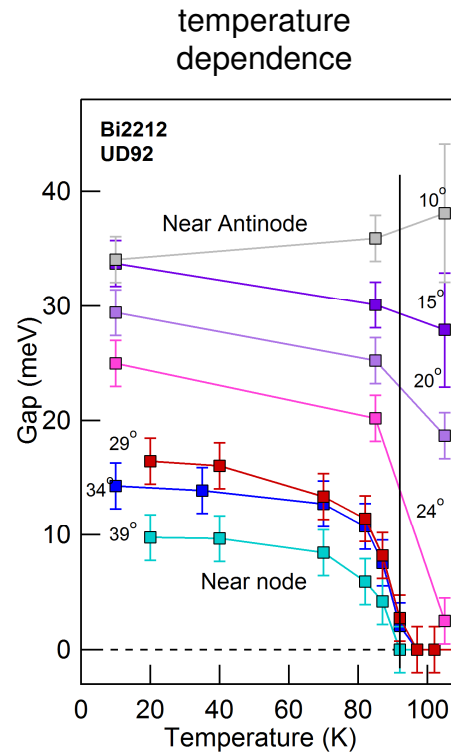
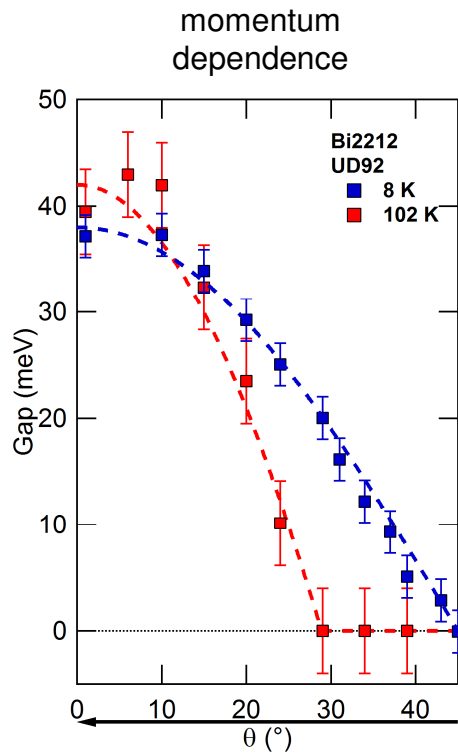
cuprate phase diagram and electronic structure



The nature of the pseudogap

- Different from SC?
- Crossover or phase transition?
- Electronic symmetry?
- Interplay between PG and SC?
- QCP?

energy gaps – nodal-antnodal dichotomy

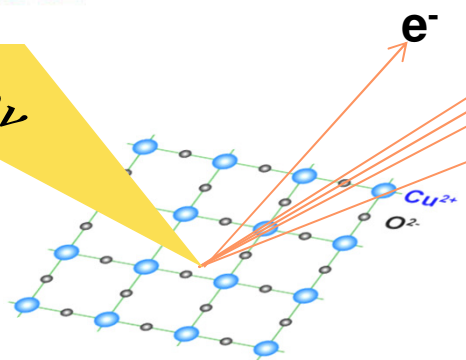


- Bi2212: K. Tanaka *et al.*, *Science* **314**, 1910 (2006)
 Bi2212: W. S. Lee *et al.*, *Nature* **450**, 81 (2007)
 LBCO: R. H. He *et al.*, *Nat. Phys.* **5**, 119 (2009)
 LSCO: T. Yoshida *et al.*, *Phys. Rev. Lett.* **103**, 037004 (2009)
 Bi2201: R. H. He* and M. Hashimoto* *et al.*, *Science* **331**, 1579 (2011)
 Bi2201: M. Hashimoto *et al.*, *Phys. Rev. B* **86**, 094504 (2012)
 Bi2212: I. M. Vishik *et al.*, *PNAS* **109**, 18332 (2012)
Review: M. Hashimoto *et al.*, *Nat. Phys.* **10**, 483 (2014)

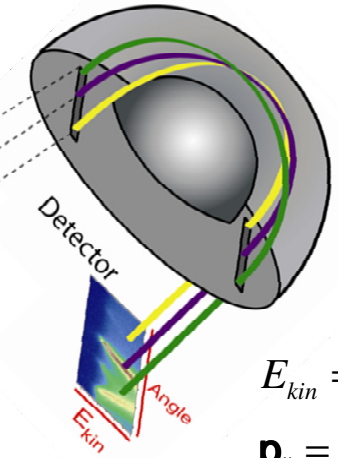
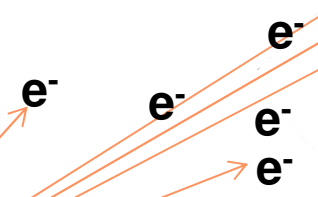
ARPES



$h\nu$



CuO₂ plane

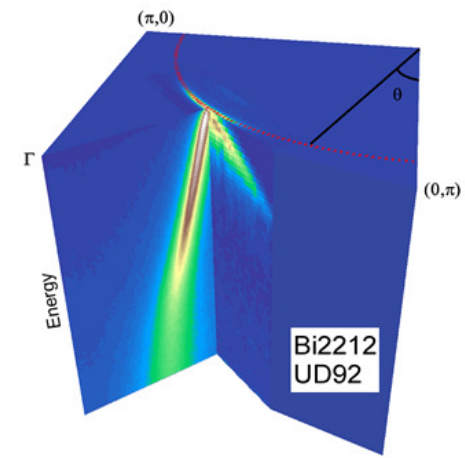


$$E_{kin} = h\nu - \phi - |E_B|$$

$$\mathbf{p}_{\parallel} = \hbar\mathbf{k}_{\parallel} = \sqrt{2mE_{kin}} \cdot \sin \theta$$

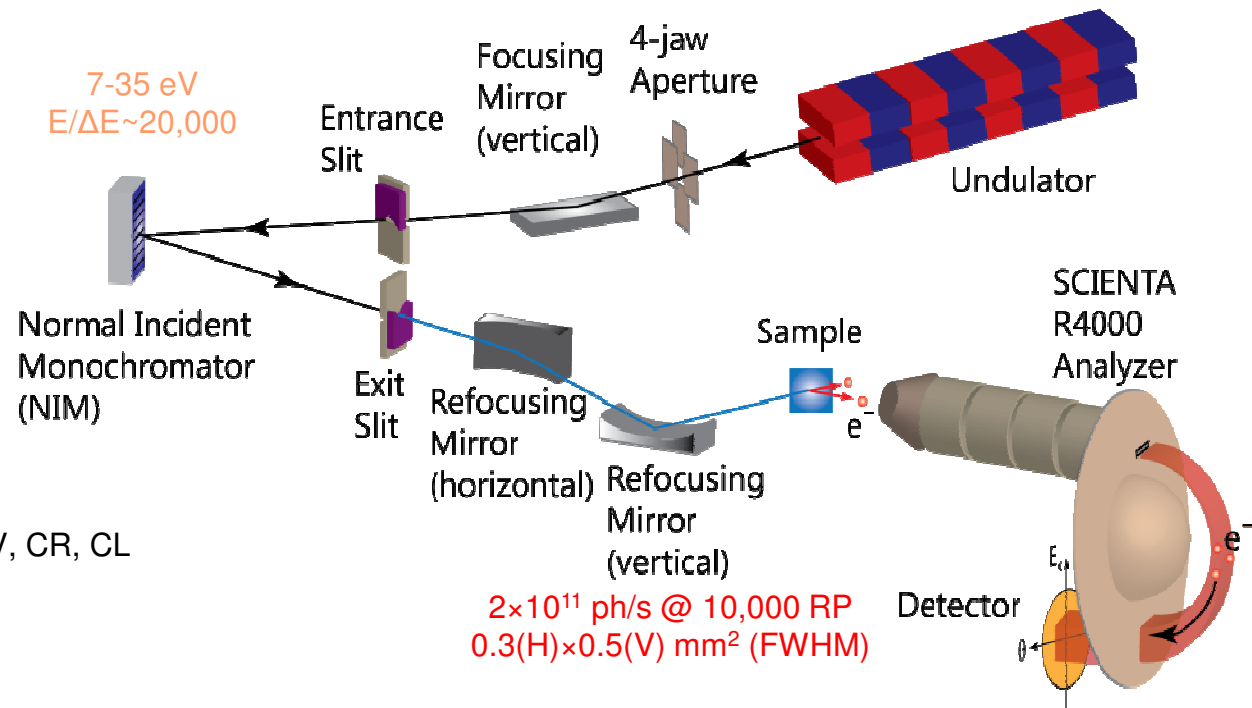
ARPES directly measures spectral function $A(k,\omega)$

- band dispersion and Fermi surface
- spectral energy gap
- correlation effect
- ...
- $I(\mathbf{k}, \omega) \sim A(\mathbf{k}, \omega)f(\omega, T) \rightarrow A(\mathbf{k}, \omega) \sim I(\mathbf{k}, \omega)/f(\omega, T)$



I. M. Vishik et al., Phys. Rev. Lett. **104**, 207002 (2010)

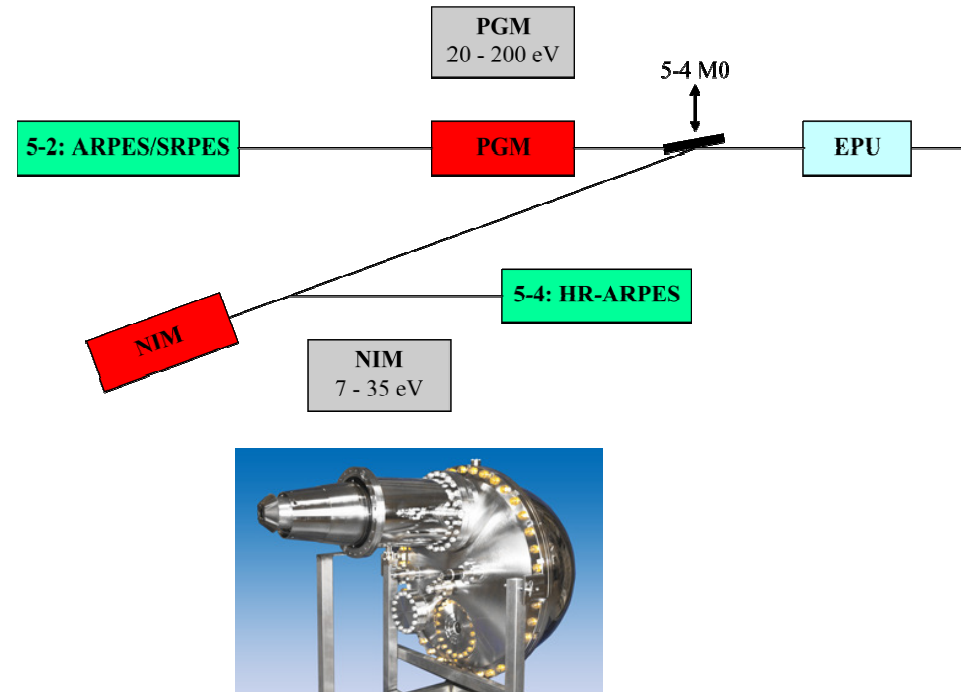
Beam Line 5-4 at SSRL



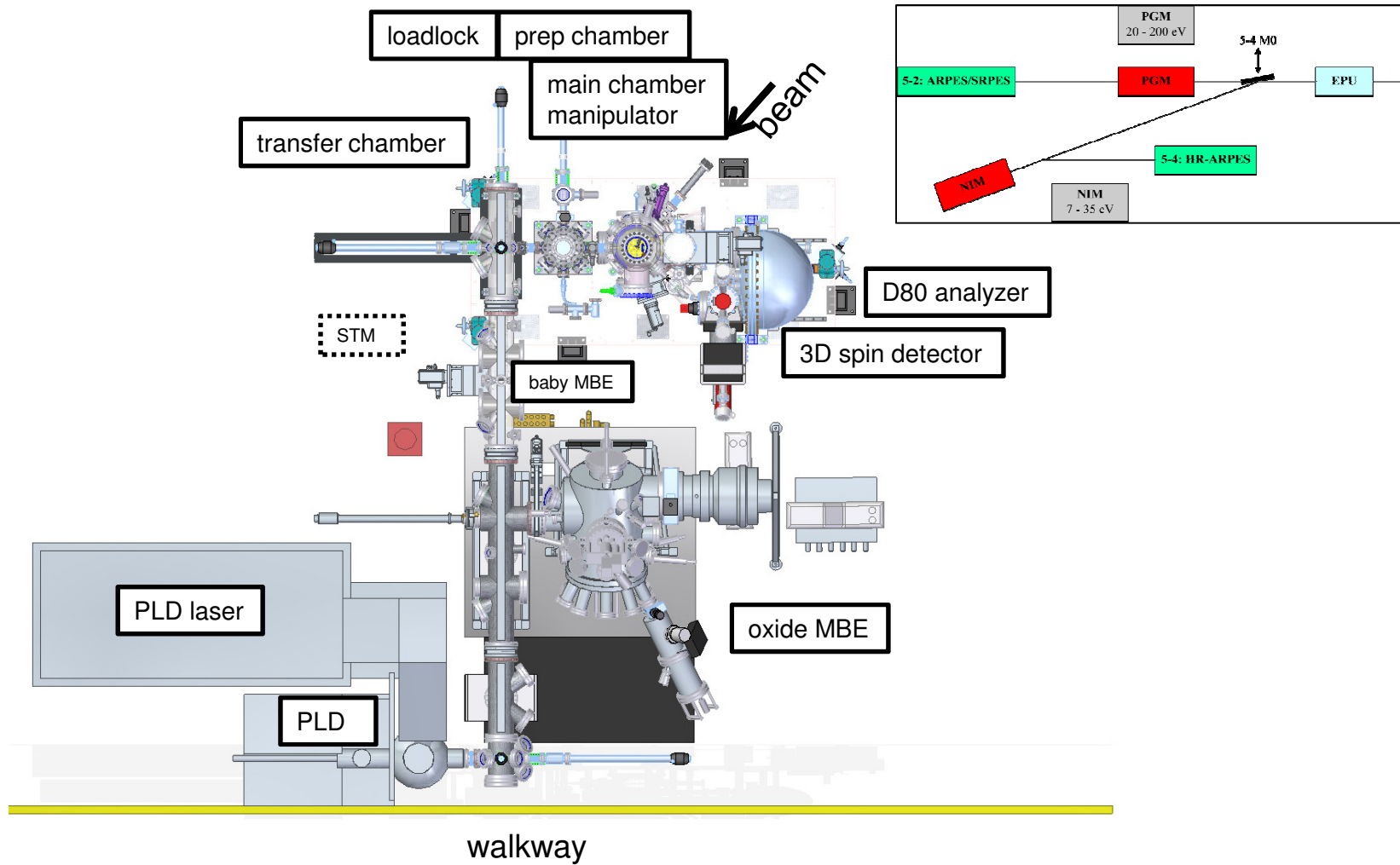
- NIM branch line
 - 7-35 eV
 - polarization, LH, LV, CR, CL
 - $E/\Delta E \sim 20,000$
- UHV $< 3 \times 10^{-11}$ Torr
- Scienta R4000 analyzer
 - ~few to 10 meV energy resolution
- 5-axis manipulator
 - 6 - 400 K
- complementary to new branch line 5-2

new Beam Line 5-2 at SSRL

- PGM branch line
 - 20 – 200 eV
 - small beam size: < 50 (H) x 20 (V) micron
 - polarization control (LH, LV, CR, CL)
 - $E/\Delta E > 25000$
- Scienta D80 analyzer
 - $\varnothing 80$ mm MCP detector
 - 3D mini Mott spin detector
 - < few meV energy resolution
- 6-axis manipulator
 - < 10 K
 - compatible with sample holders for thin films
- complementary to the existing NIM branch line



new Beam Line 5-2 at SSRL



outline

1. Introduction

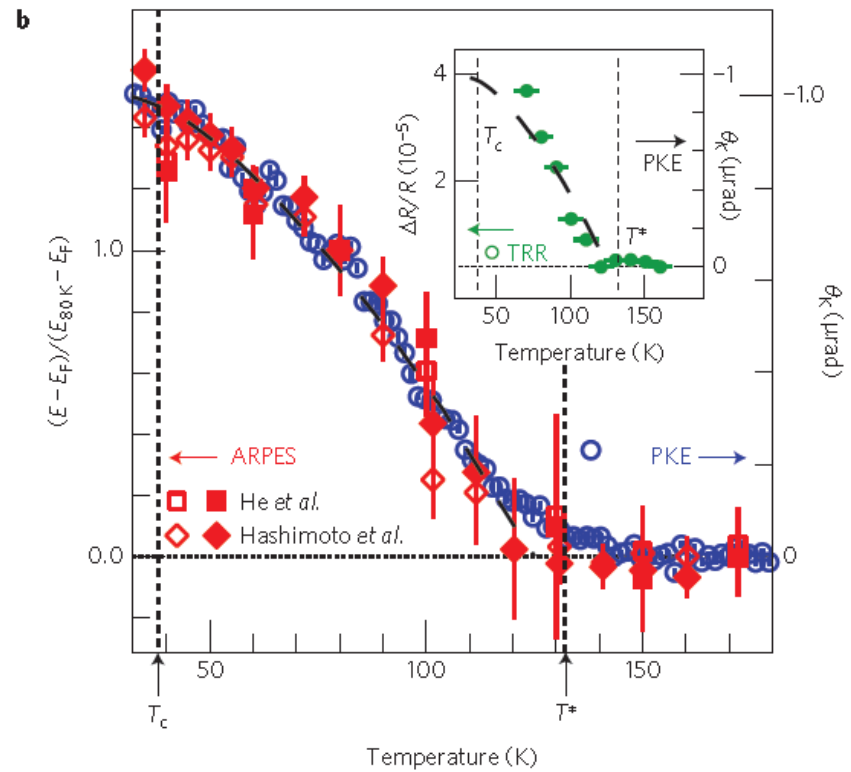
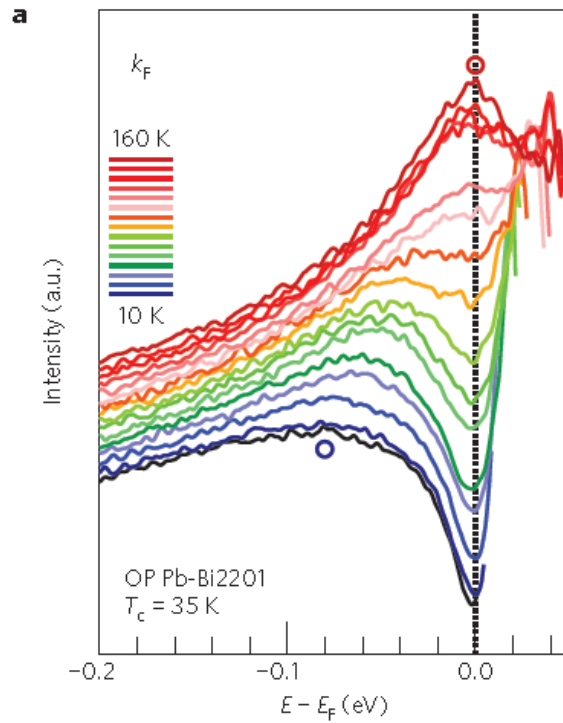
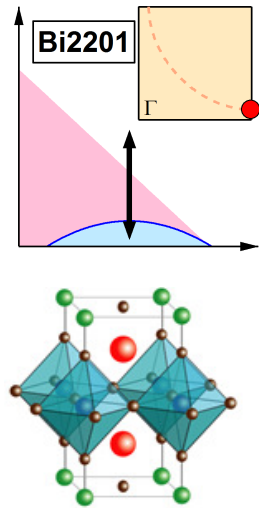
- cuprates
- energy gap
- ARPES
- ARPES Beam Lines at SSRL

2. Pseudogap as a distinct phase

3. Interplay between the pseudogap and superconductivity

4. Summary

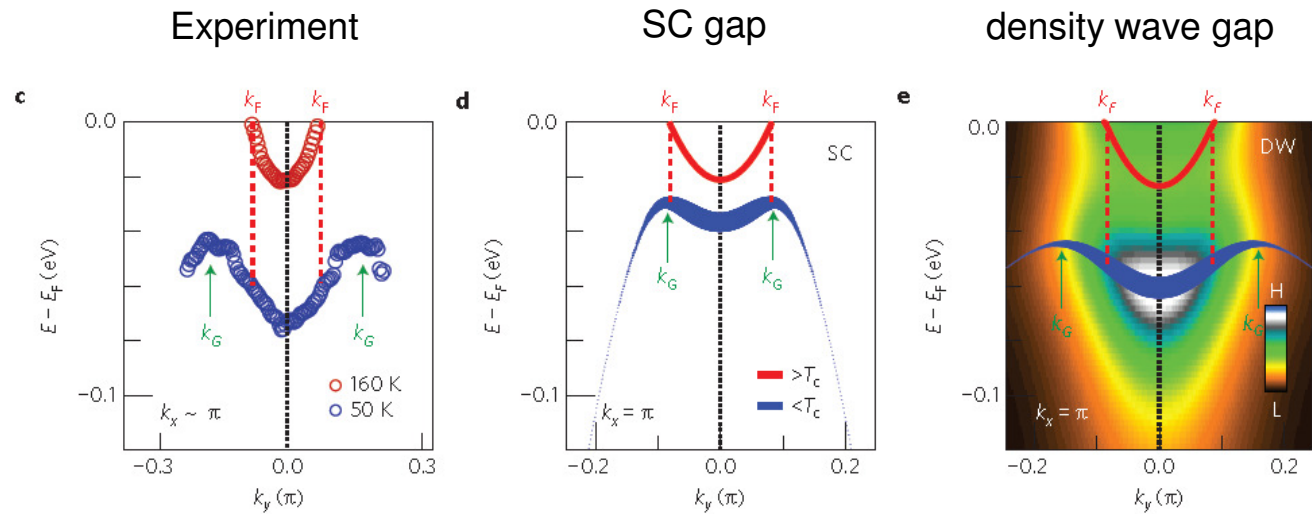
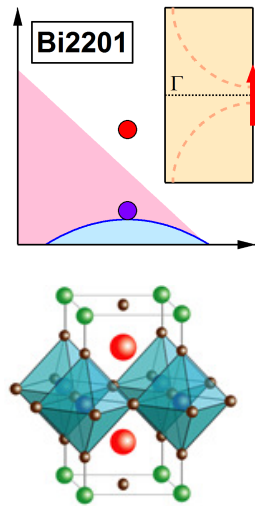
pseudogap phase transition



Kerr effect: A. Kapitulnik
 TRR: J. Orenstein
 Theory: S. Kivelson

- M. Hashimoto* and R. H. He* *et al.*, *Nat. Phys.* **6**, 414 (2010)
- R. H. He* and M. Hashimoto* *et al.*, *Science* **331**, 1579 (2011)

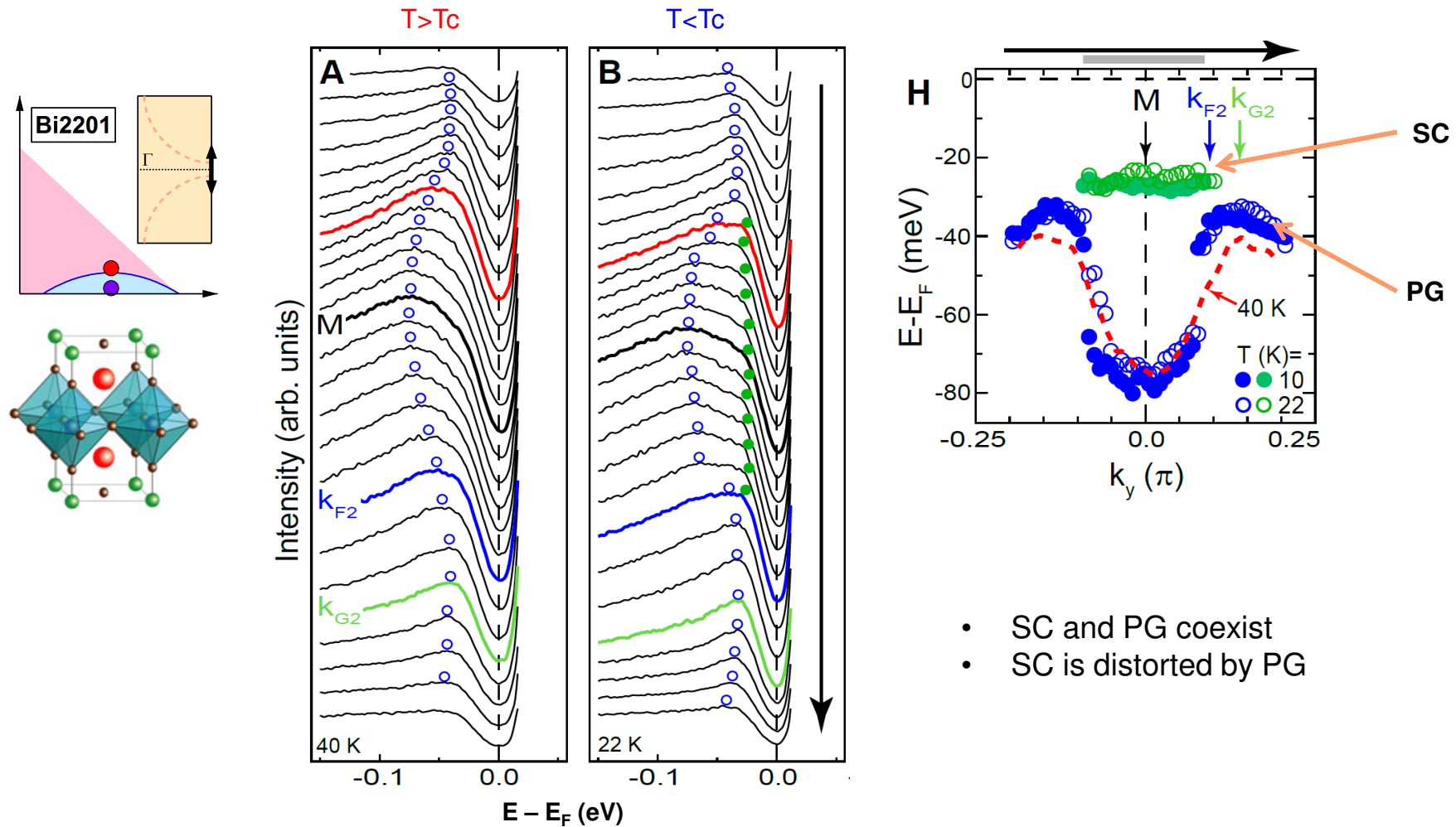
symmetry breaking below pseudogap temperature



- back-bending momentum $\neq k_F$
- different from SC gap
- consistent with density wave
- not perfect nesting

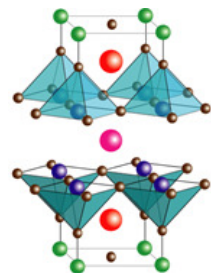
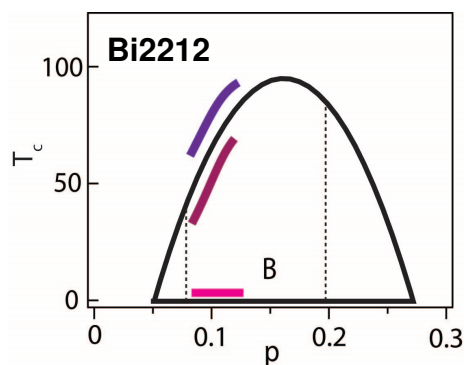
M. Hashimoto* and R. H. He* *et al.*, *Nat. Phys.* **6**, 414 (2010)

coexistence of pseudogap and superconductivity



R. H. He* and M. Hashimoto* *et al.*, *Science* **331**, 1579 (2011)

momentum dependent pseudogap suppression



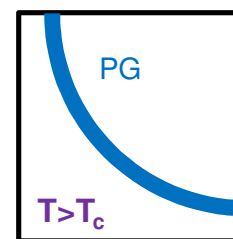
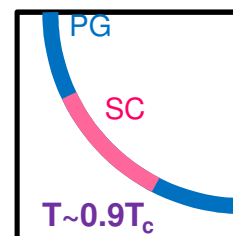
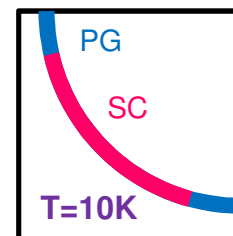
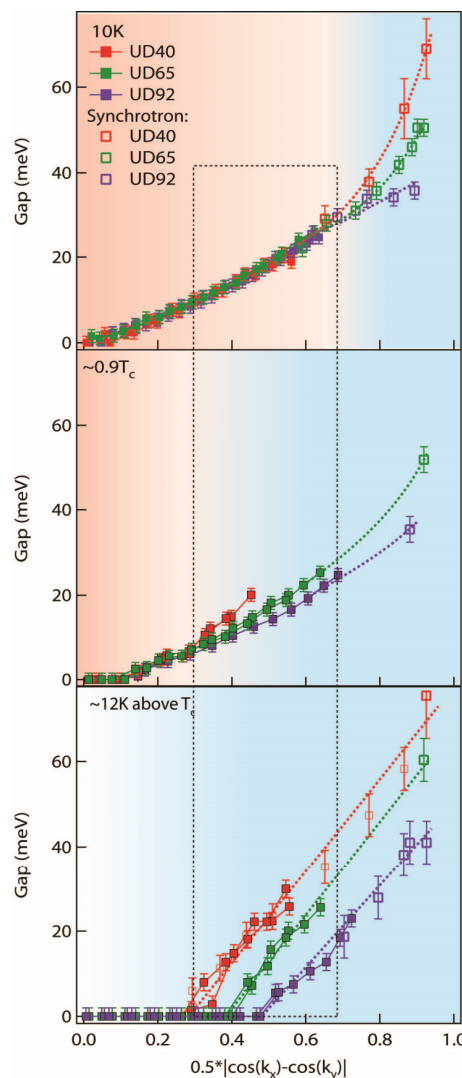
Intermediate momenta

- $T \ll T_c$

doping independent SC gap

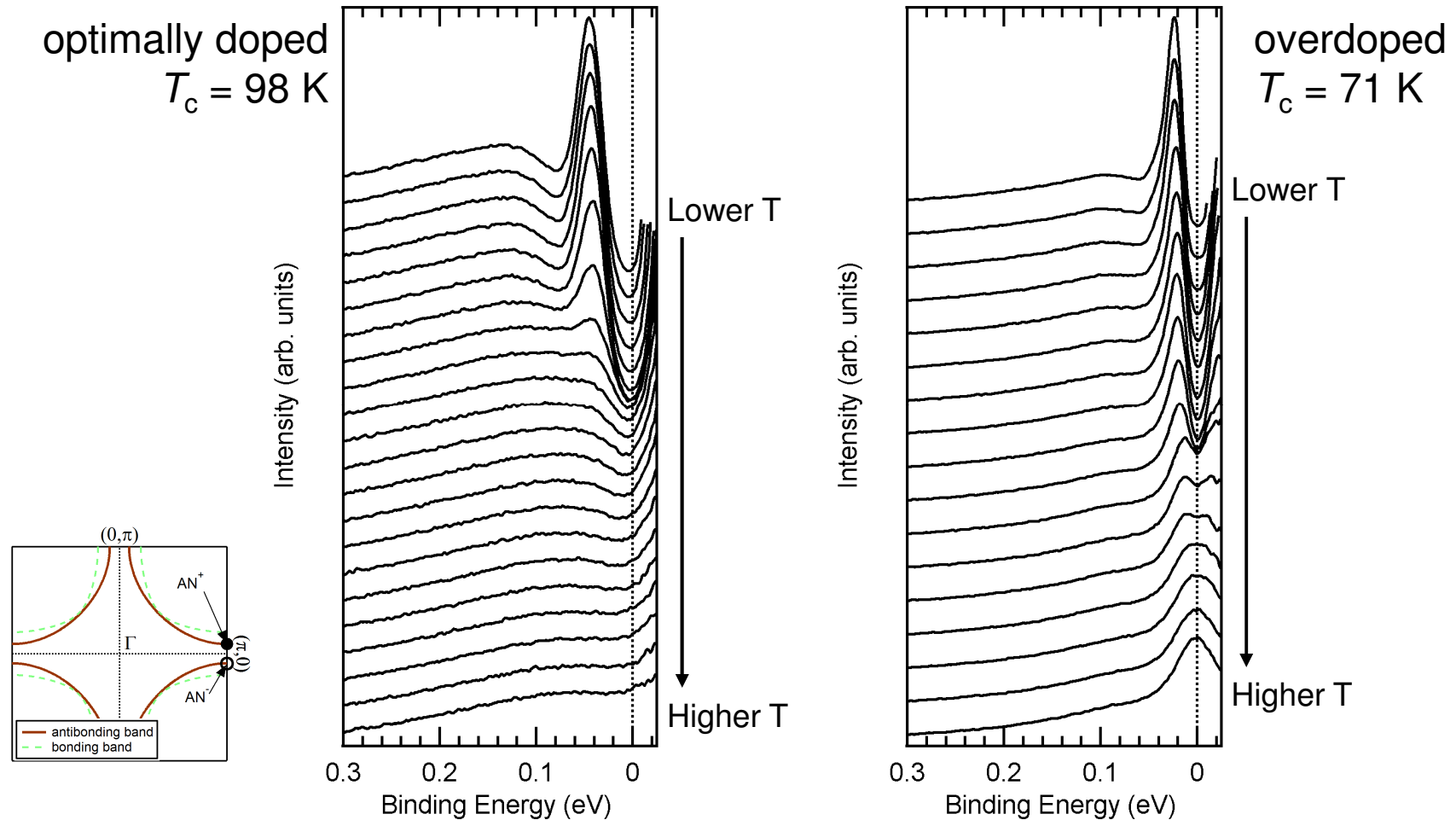
- $T > T_c$

doping dependent PG



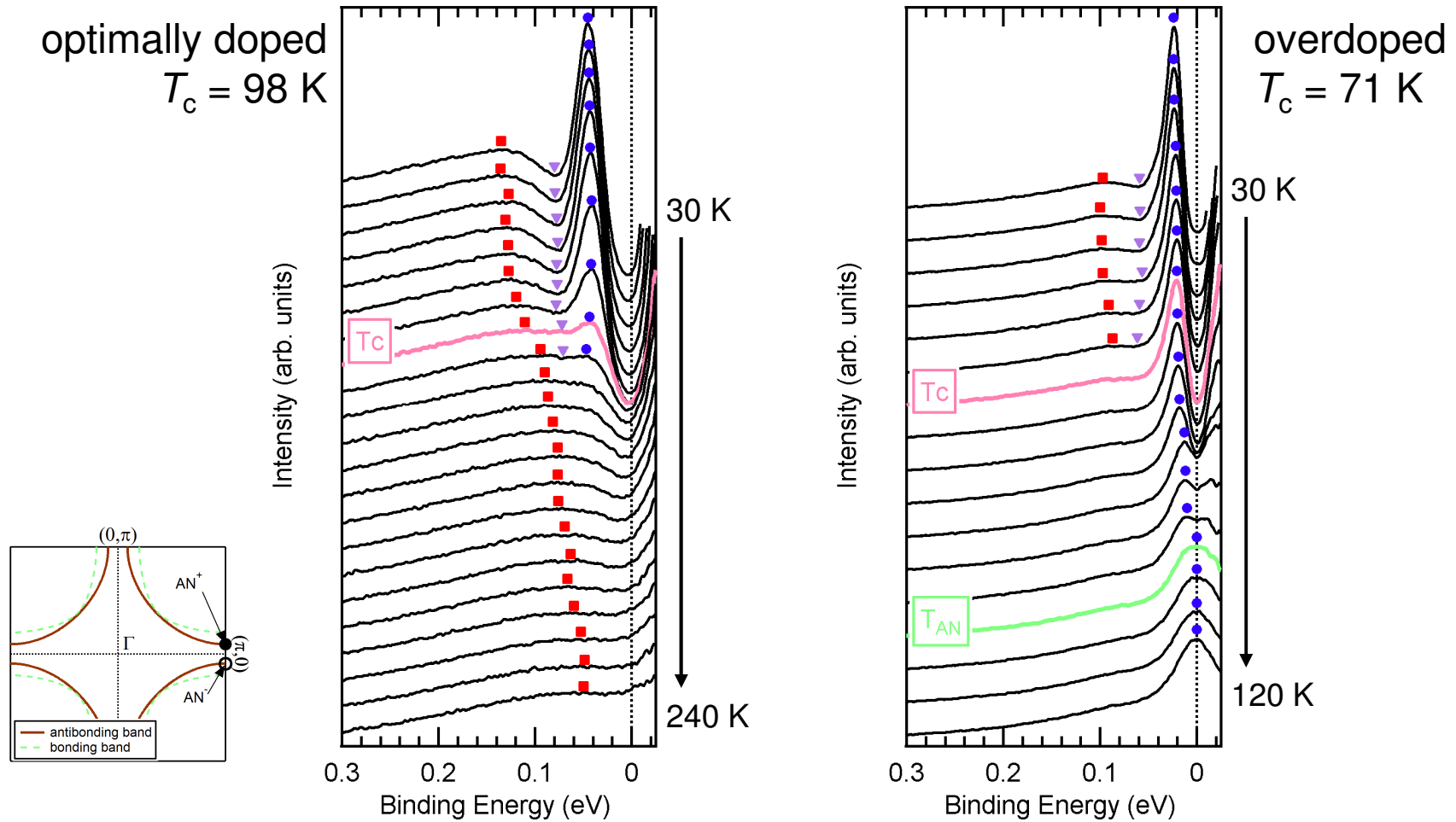
I. M. Vishik *et al.*, *PNAS* **109**, 18332 (2012)

Bi2212 antinodal spectra



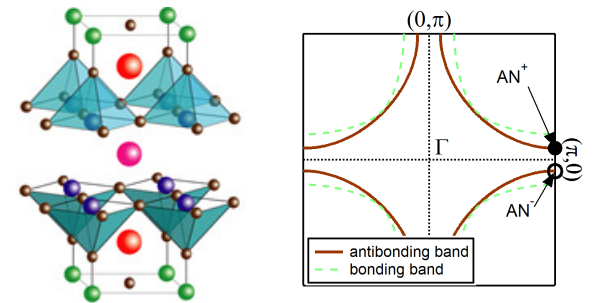
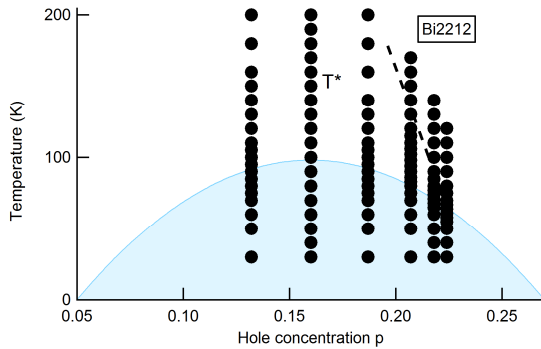
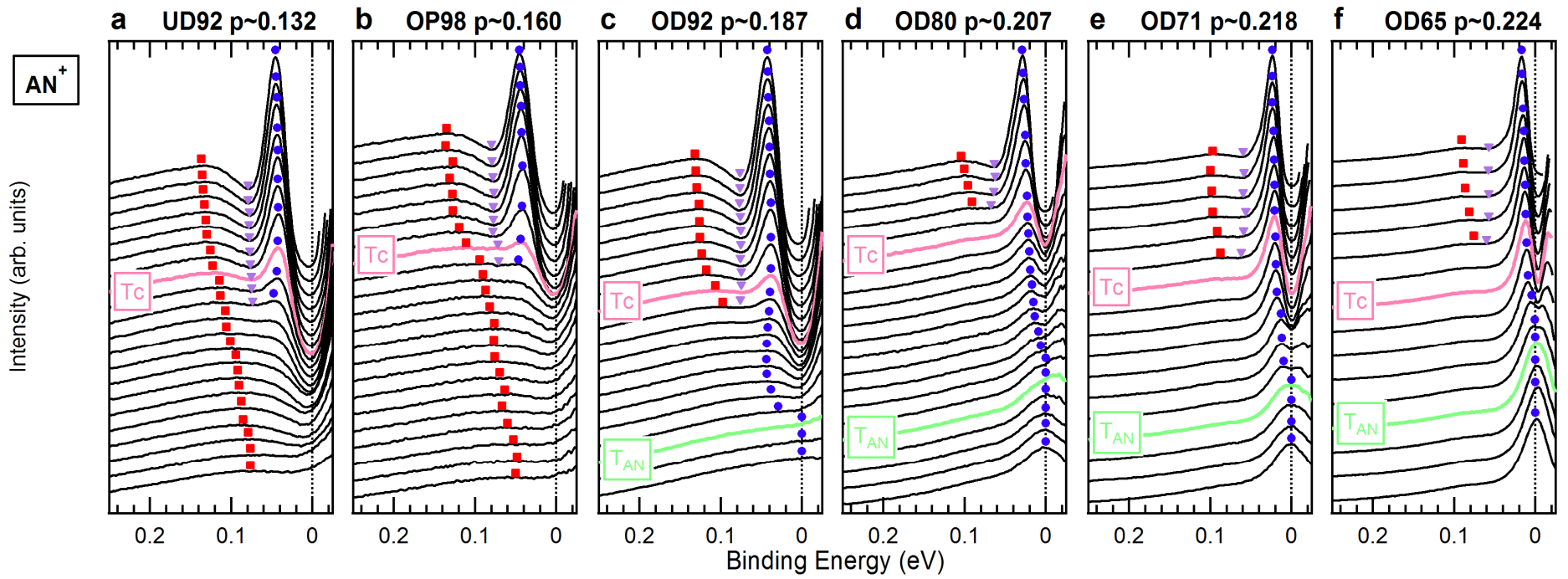
M. Hashimoto *et al.*, *Nat. Mat.* advance online publication

Bi2212 antinodal spectra



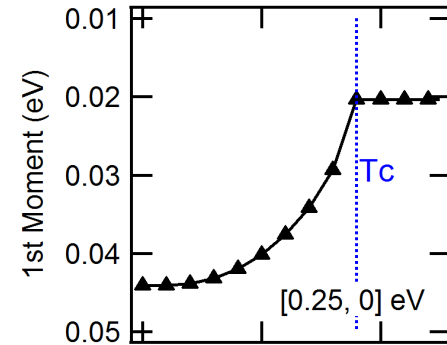
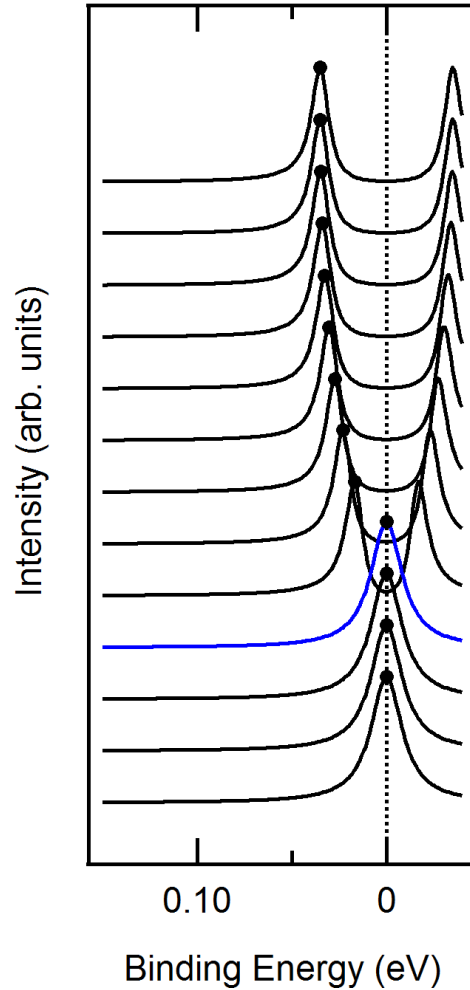
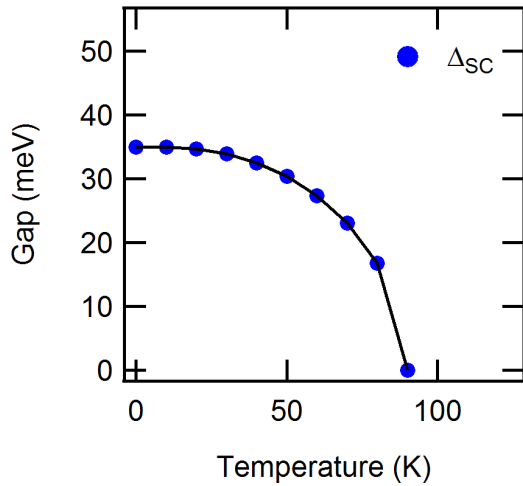
M. Hashimoto *et al.*, *Nat. Mat.* advance online publication

Bi2212 antinodal spectra

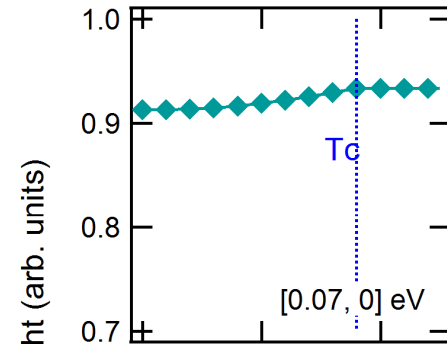


M. Hashimoto *et al.*, *Nat. Mat.* advance online publication

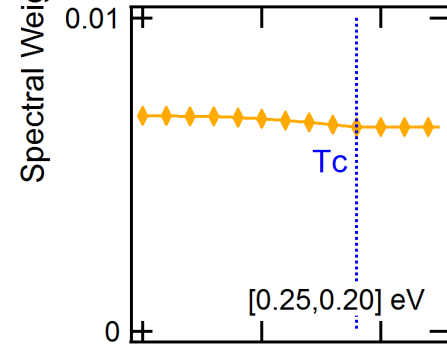
what happens to the spectral weight when sc gap opens?



Center of Mass

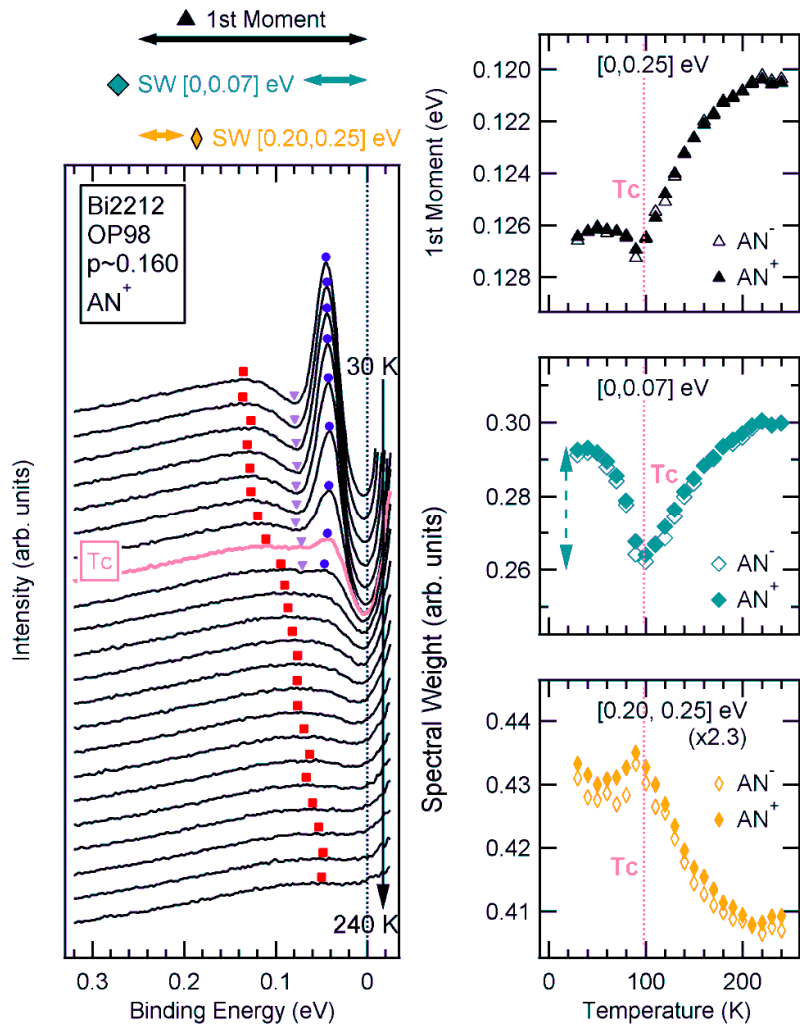


Spectral Intensity near E_F



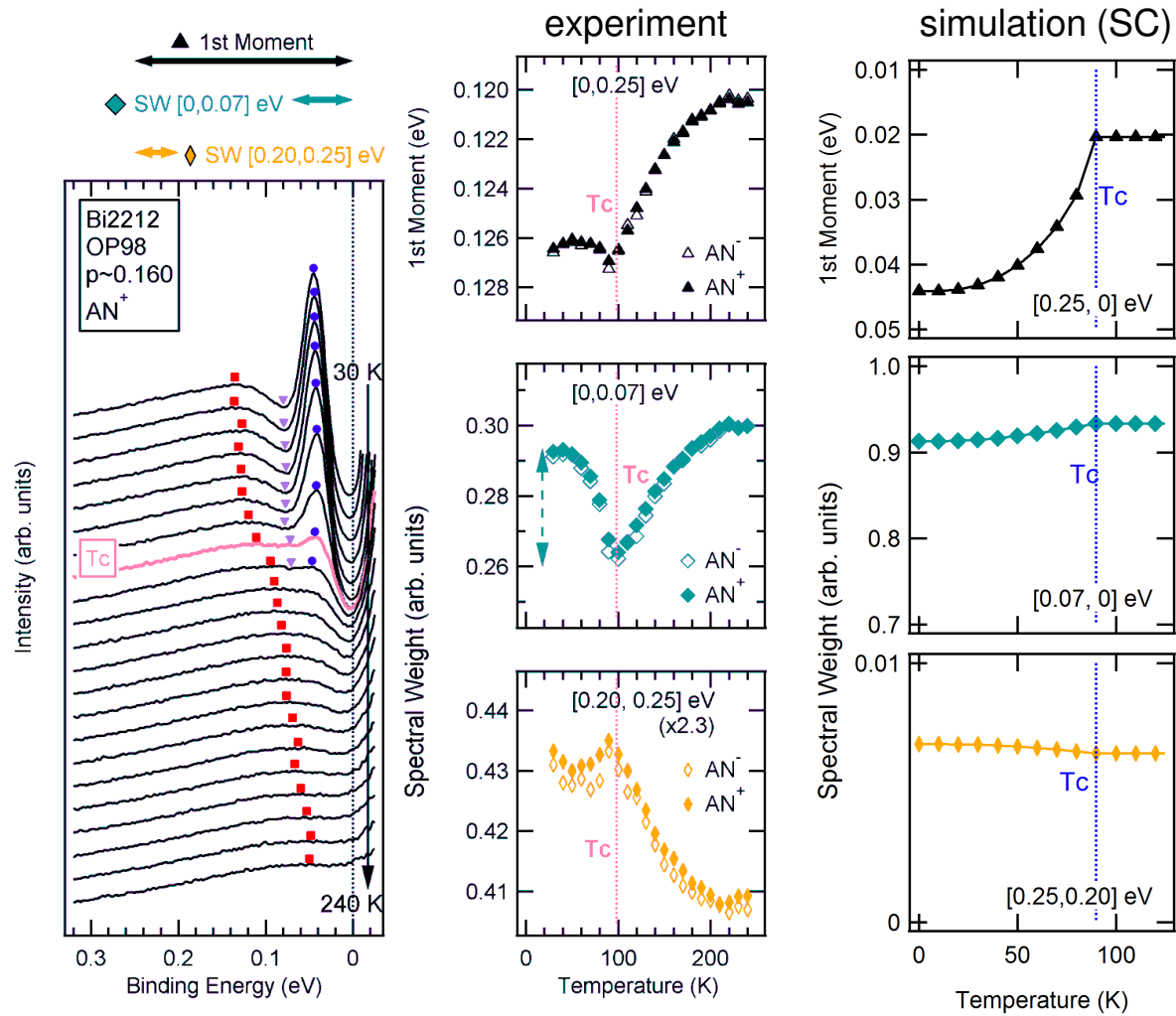
Spectral Intensity away from E_F

phase competition in spectral weight



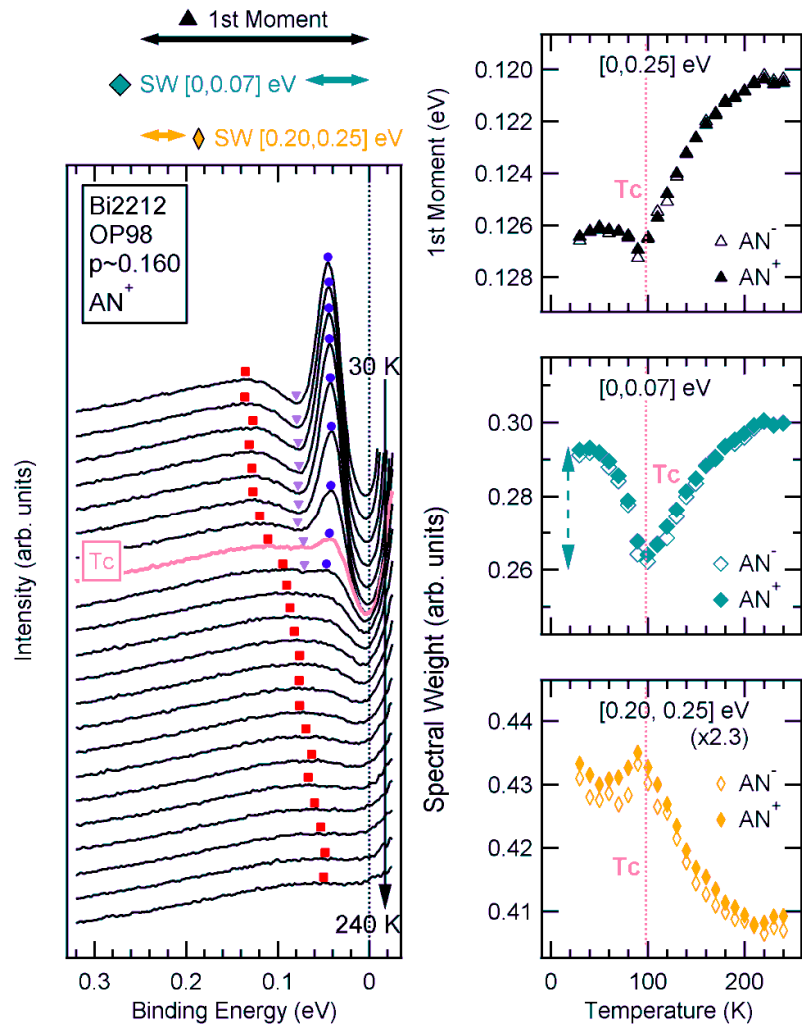
- singularity at T_c in the spectral weight
- singularity not evident in the spectral lineshape

phase competition in spectral weight



M. Hashimoto *et al.*, *Nat. Mat.* advance online publication

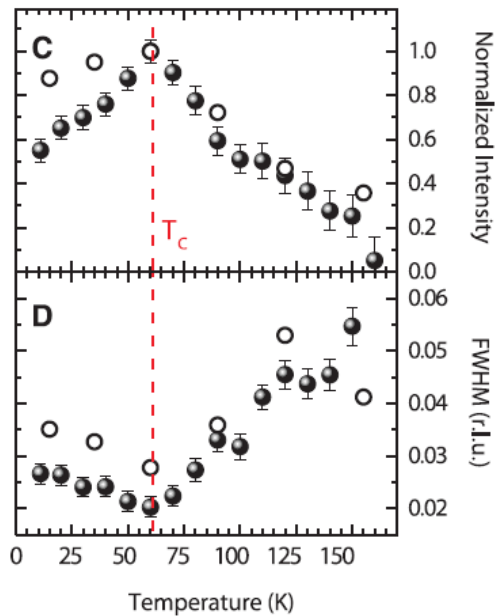
phase competition in spectral weight



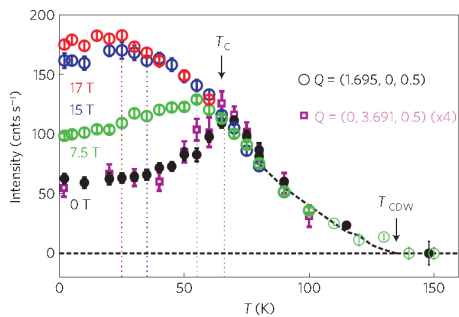
- singularity at T_c in the spectral weight
- singularity not evident in the spectral lineshape
- SC alone cannot explain the spectral weight singularity
- PG spectral weight is taken away by SC, suggesting phase competition

phase competition in cuprates

YBCO

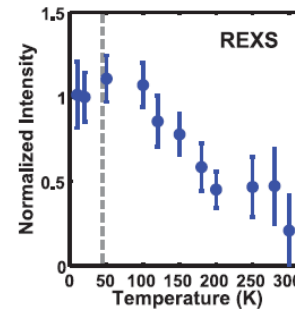


G. Ghiringhelli *et al.*,
Science **337**, 821 (2012)

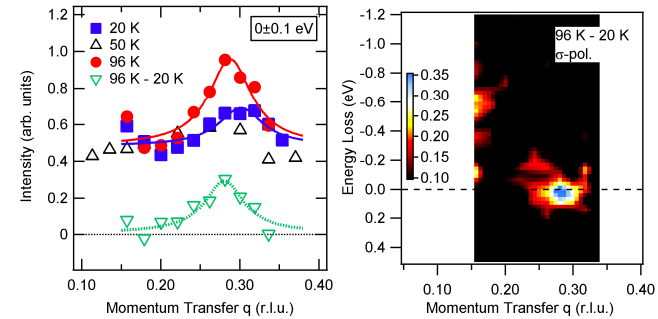


J. Chang *et al.*,
Nat Phys **8**, 871 (2012)

Bi2212



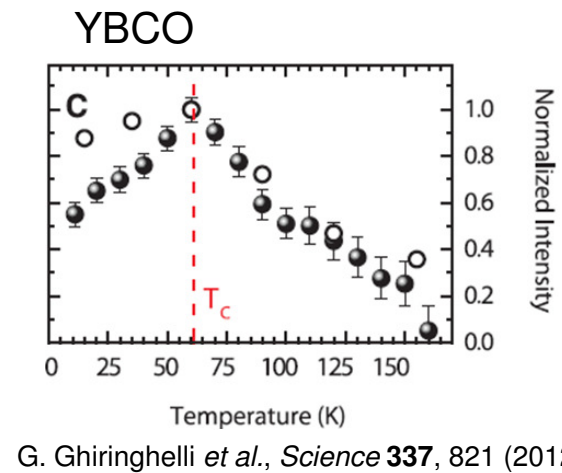
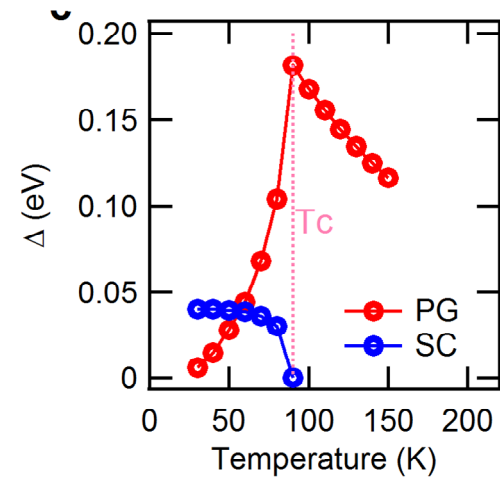
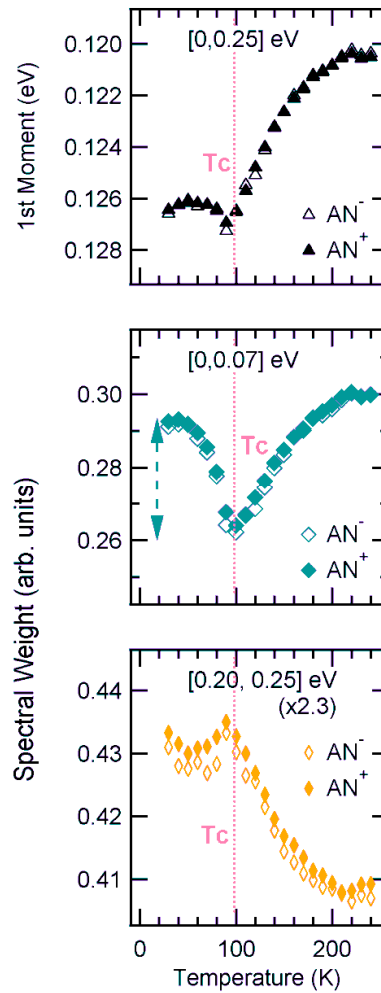
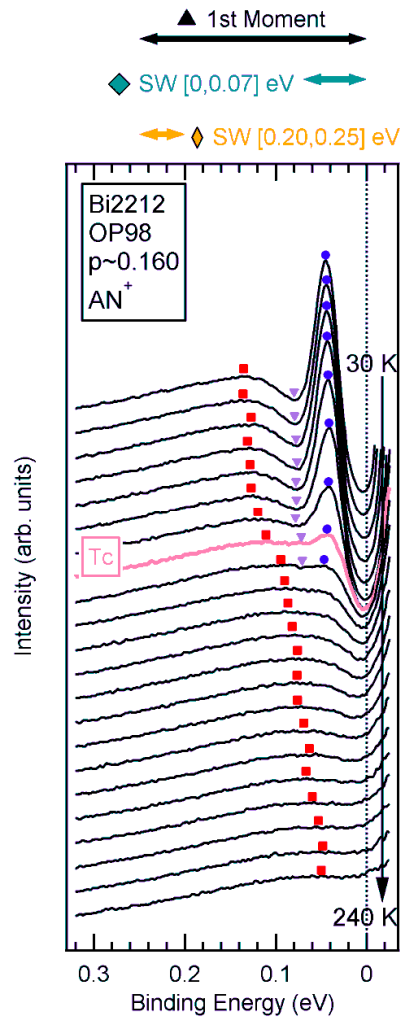
E. H. da Silva Neto *et al.*,
Science **343**, 393 (2014)



M. Hashimoto *et al.*, *Phys. Rev. B* **89**, 220511 (2014)

- Charge ordering suppressed below T_c
- Pseudogap ~ charge ordering?
- Spectroscopic signature?

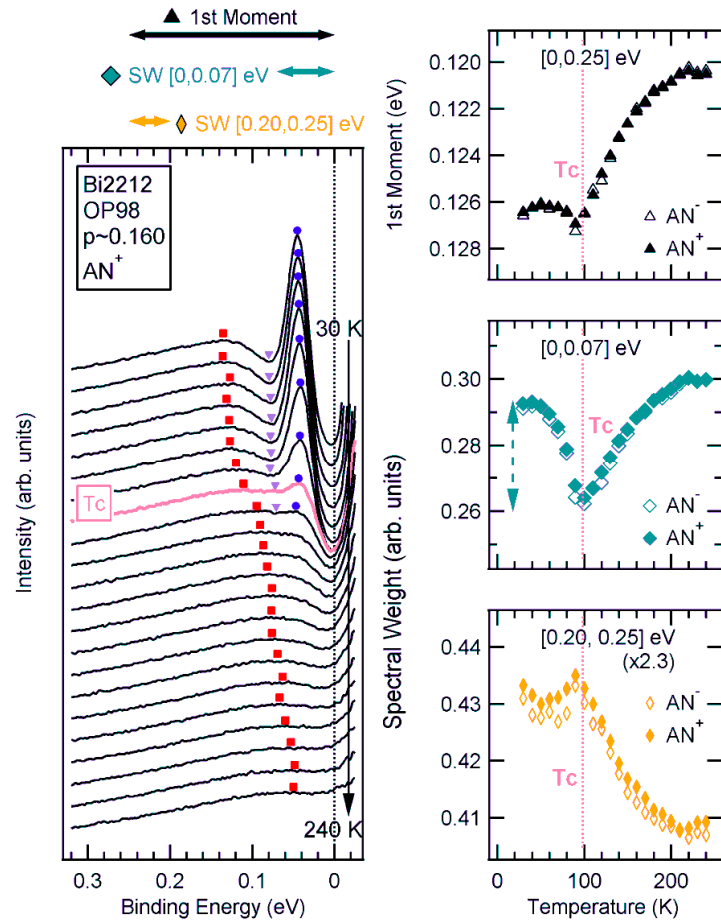
phase competition in spectral weight



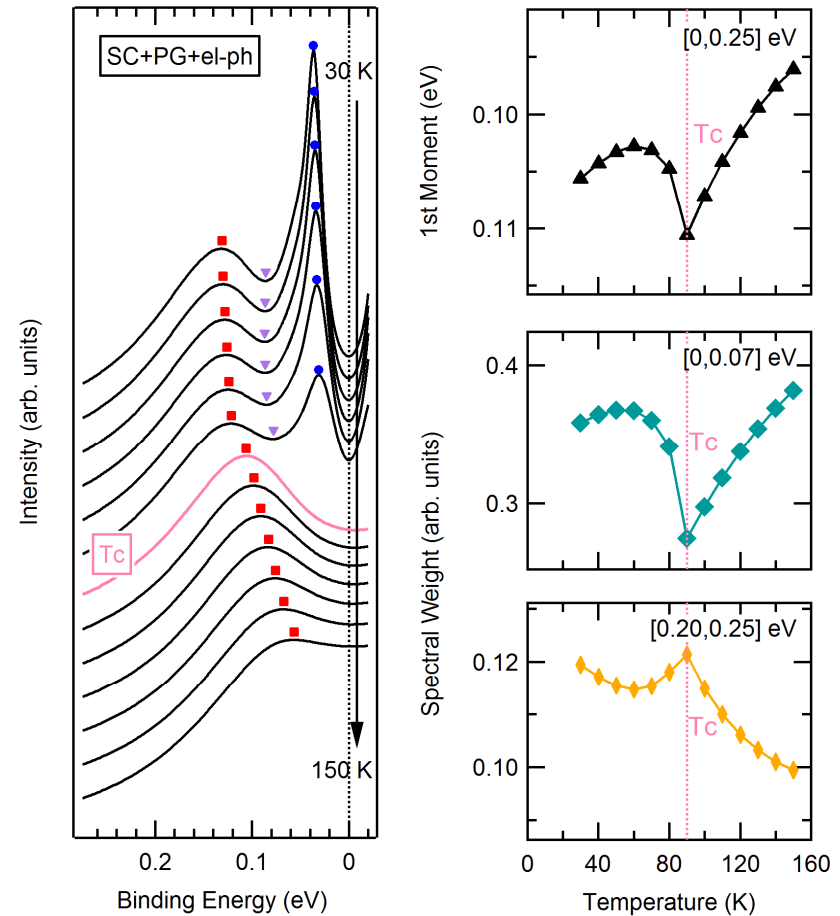
M. Hashimoto *et al.*, *Nat. Mat.* advance online publication

comparison with simulation

experiment

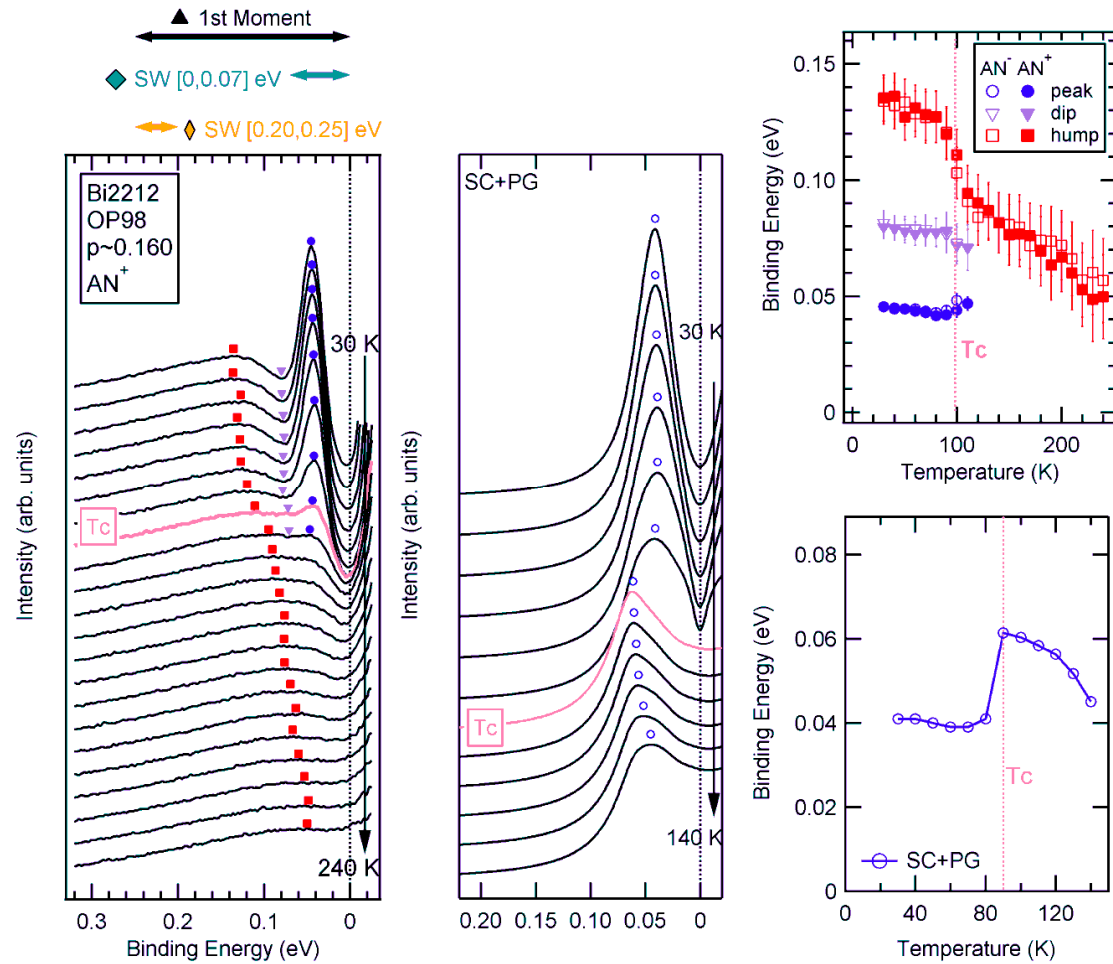


theory



M. Hashimoto *et al.*, *Nat. Mat.* advance online publication

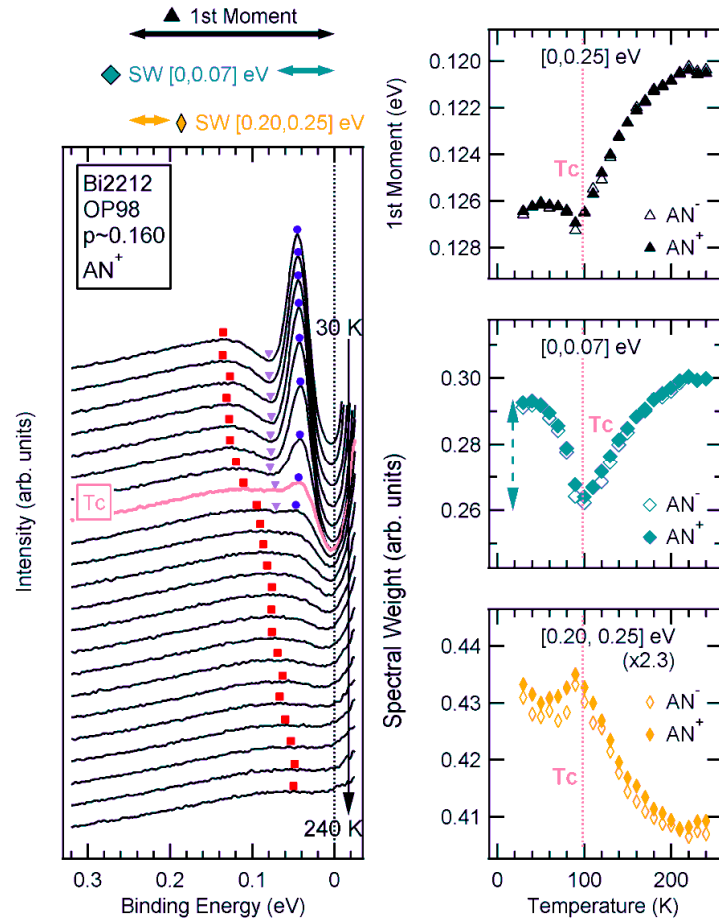
simulation: SC + PG (CDW)



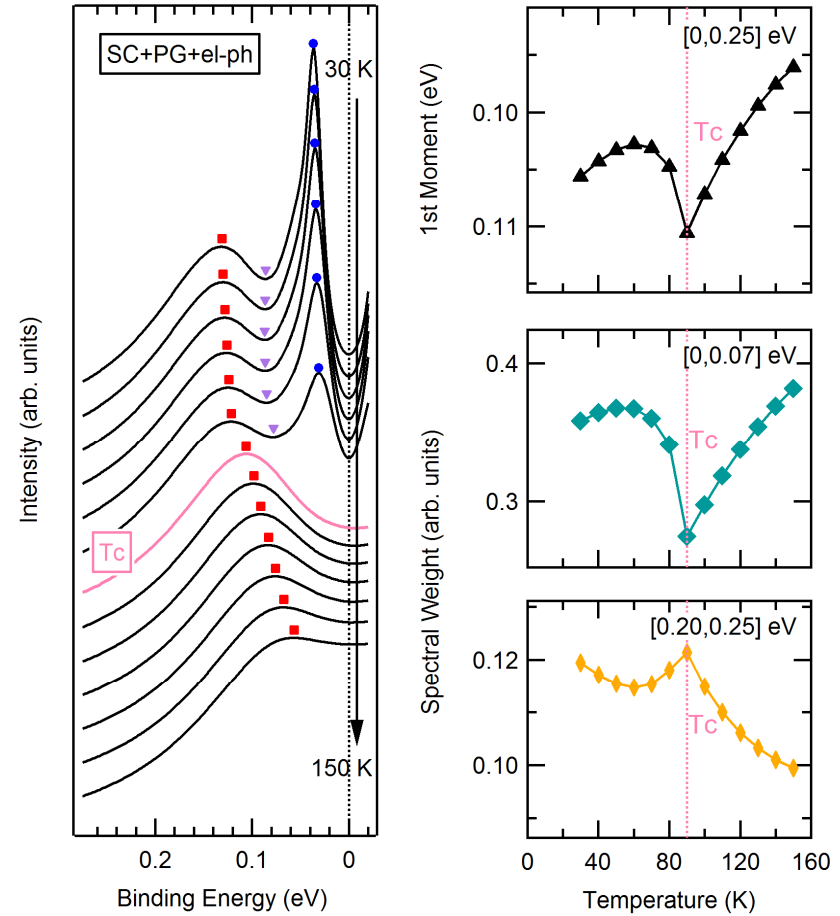
Particularly, dip and hump feature below T_c is hard to explain...

comparison with simulation

experiment

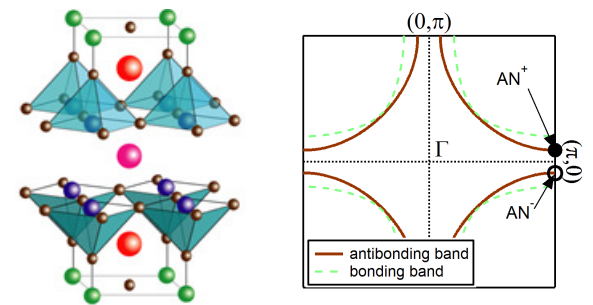
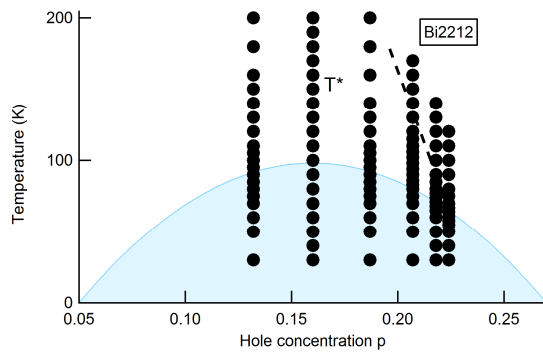
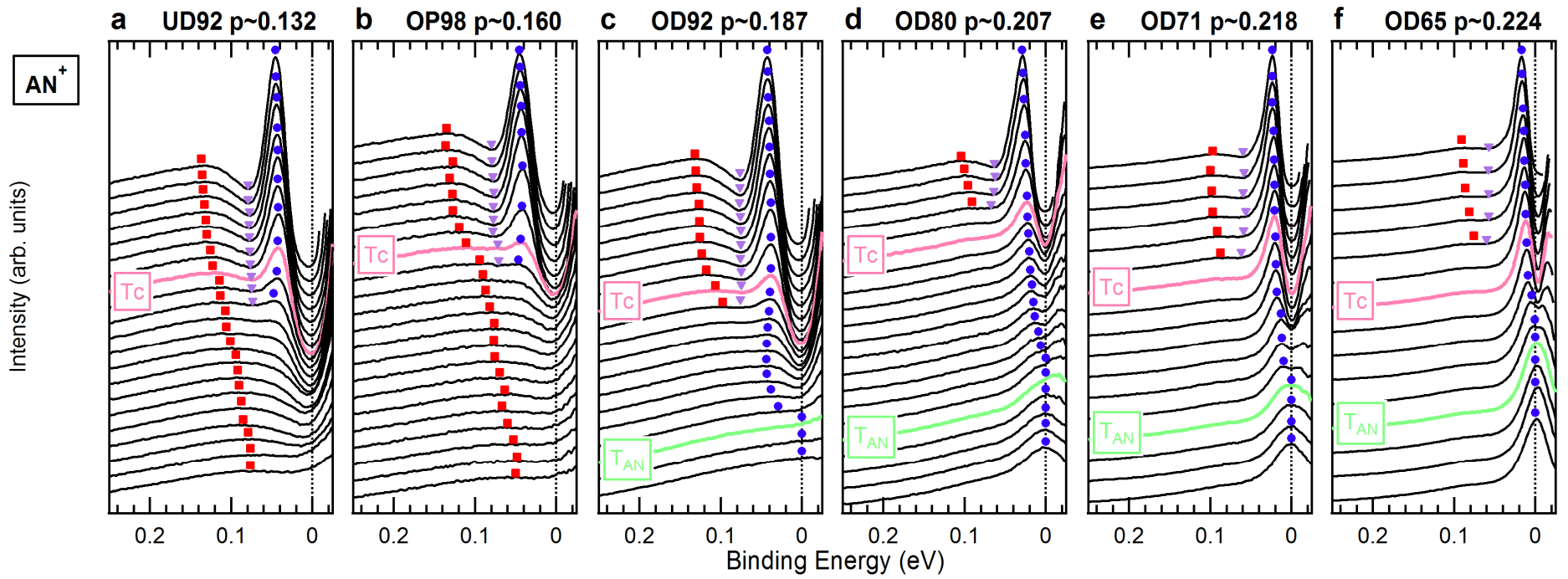


Theory (CDW + SC + el-ph)



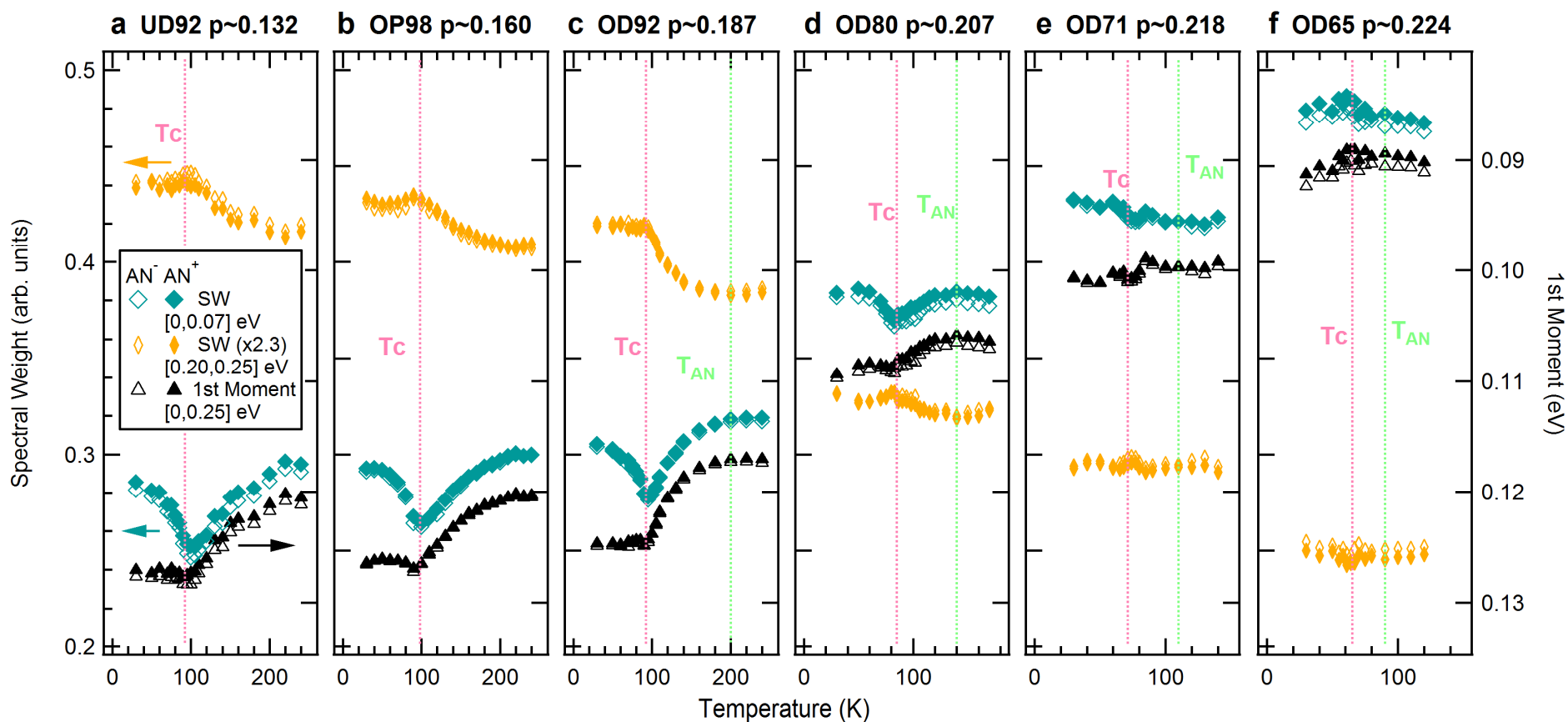
M. Hashimoto *et al.*, *Nat. Mat.* advance online publication

Bi2212 antinodal spectra

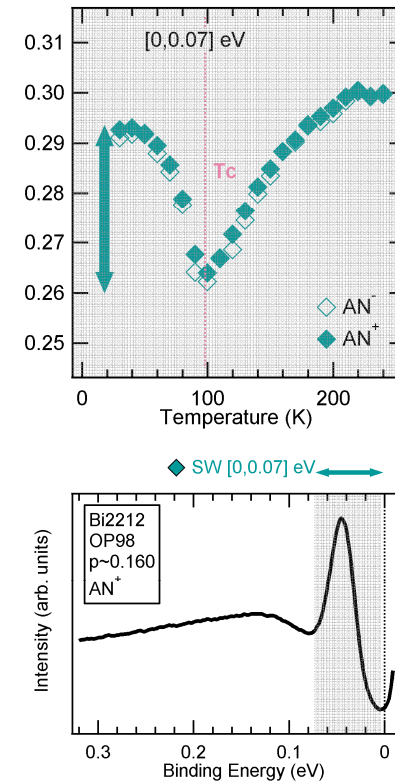
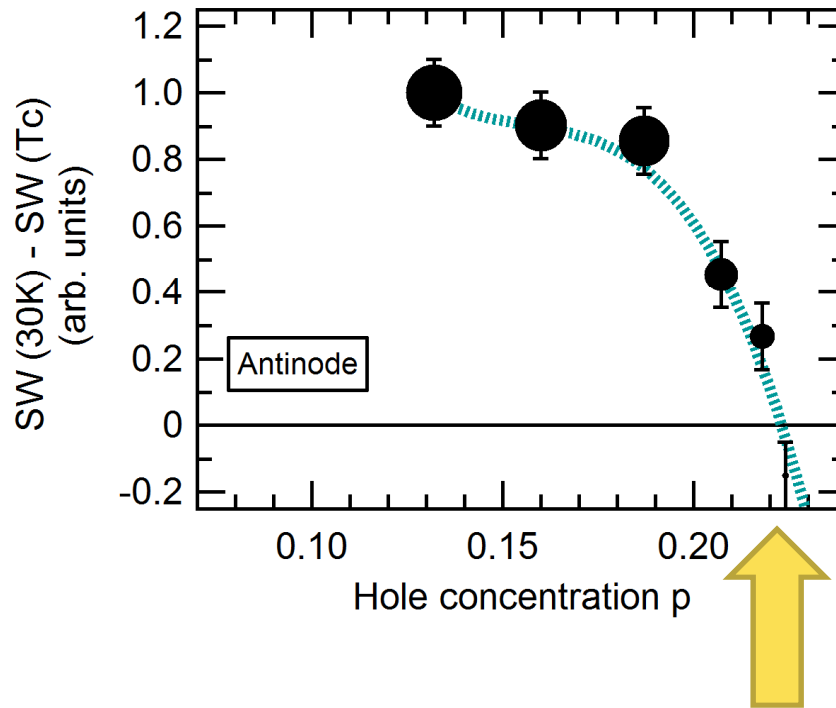


M. Hashimoto *et al.*, *Nat. Mat.* advance online publication

doping dependence of the phase competition

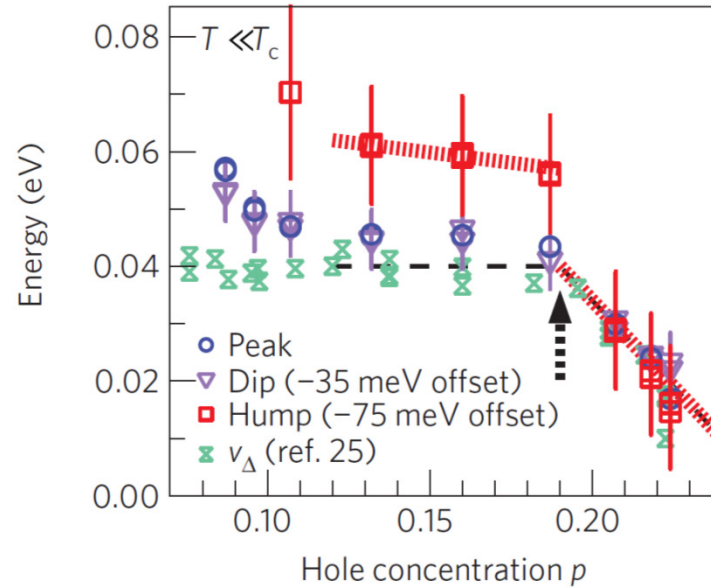
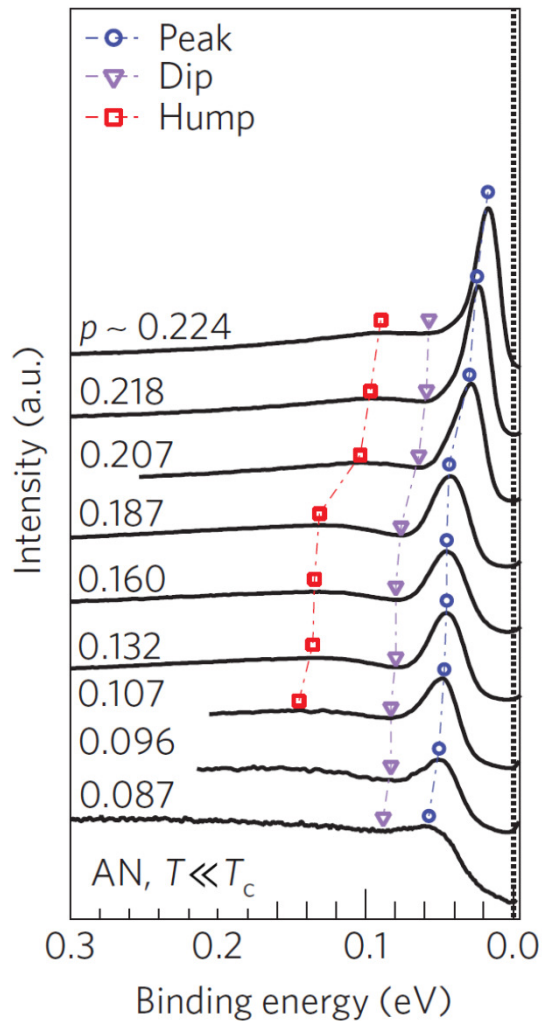


pseudogap critical point ($T \sim T_c$)



Phase competition up to at least $p \sim 0.22$ at $\sim T_c$

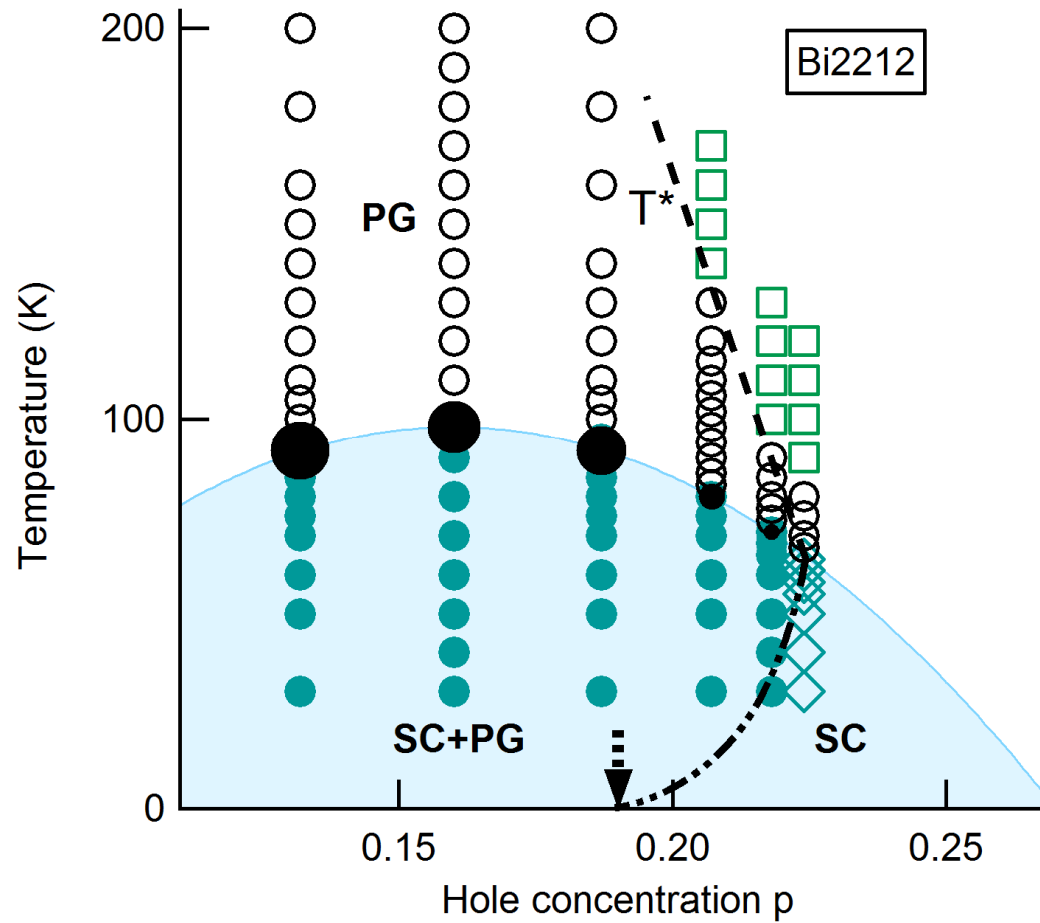
pseudogap critical point ($T \ll T_c$)



- $T \sim T_c$
Phase competition up to $p \sim 0.22$
- $T \ll T_c$
Critical point at $p \sim 0.19$
Hump related with the pseudogap

v_Δ : I. M. Vishik *et al.*, *PNAS* **109**, 18332 (2012)
M. Hashimoto *et al.*, *Nat. Mat.* advance online publication

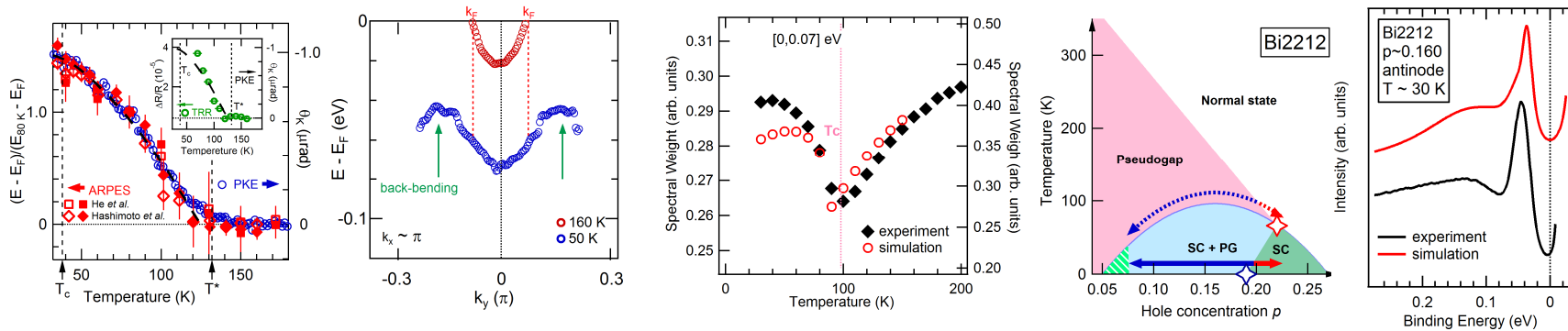
phase diagram



c.f. I. M. Vishik *et al.*, *PNAS* **109**, 18332 (2012)
M. Hashimoto *et al.*, *Nat. Mat.* advance online publication

summary

- Broken symmetry at $T < T^*$ and (rounded) phase transition at T^*
- Competition between the order parameters for SC and PG
- Experiment \approx Simulation: PG + SC + el-ph



References

- M. Hashimoto* and R.-H. He* *et al.*, *Nat. Phys.* **6**, 414 (2010)
- R.-H. He* and M. Hashimoto* *et al.*, *Science* **331**, 1579 (2011)
- M. Hashimoto *et al.*, *Phys. Rev. Lett.* **106**, 167003 (2011)
- M. Hashimoto *et al.*, *Phys. Rev. B* **86**, 094504 (2012)
- I. M. Vishik *et al.*, *PNAS* **109**, 18332 (2012)
- M. Hashimoto *et al.*, *Phys. Rev. B* **89**, 220511(R) (2014)
- ❖ M. Hashimoto, I. M. Vishik, R.-H. He, T. P. Devereaux, Z.-X. Shen, *Nat. Phys.* **10**, 483 (2014)
- ❖ M. Hashimoto *et al.*, *Nat. Mat. advance online publication*